

The background features a dark blue gradient with faint, light-colored technical diagrams. On the left side, there is a large circular scale with numerical markings from 140 to 260 in increments of 10. Several circular diagrams with arrows and dashed lines are scattered across the background, suggesting a technical or engineering context.

EMERGENCY PREPAREDNESS

SAFETY DOES NOT COME WITH
LUCKY. IT HAS TO BE **PREPARED**

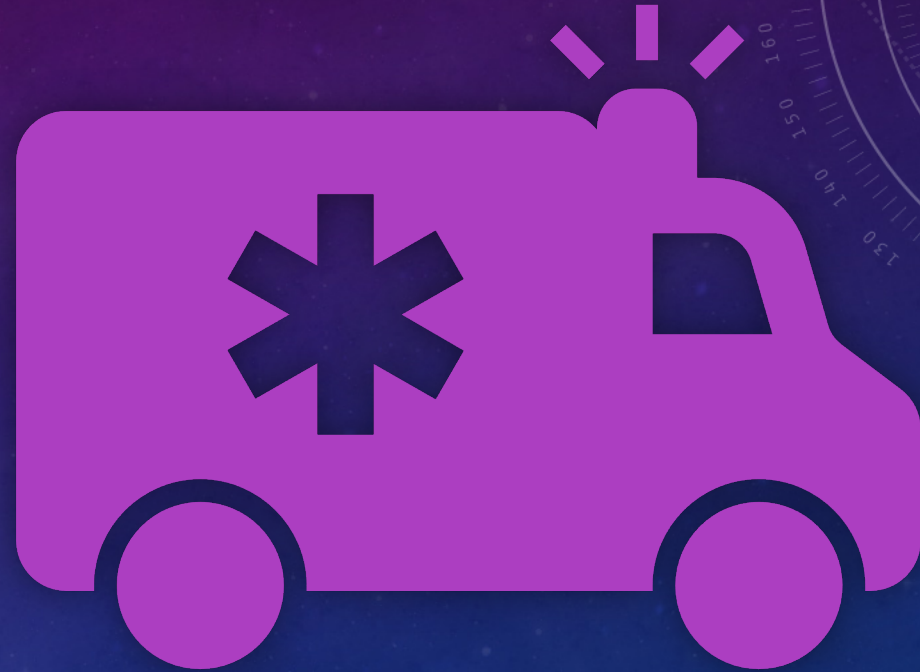


QUESTION #1

**CAN YOU BE OVER PREPARED FOR AN
EMERGENCY?**

QUESTION #2

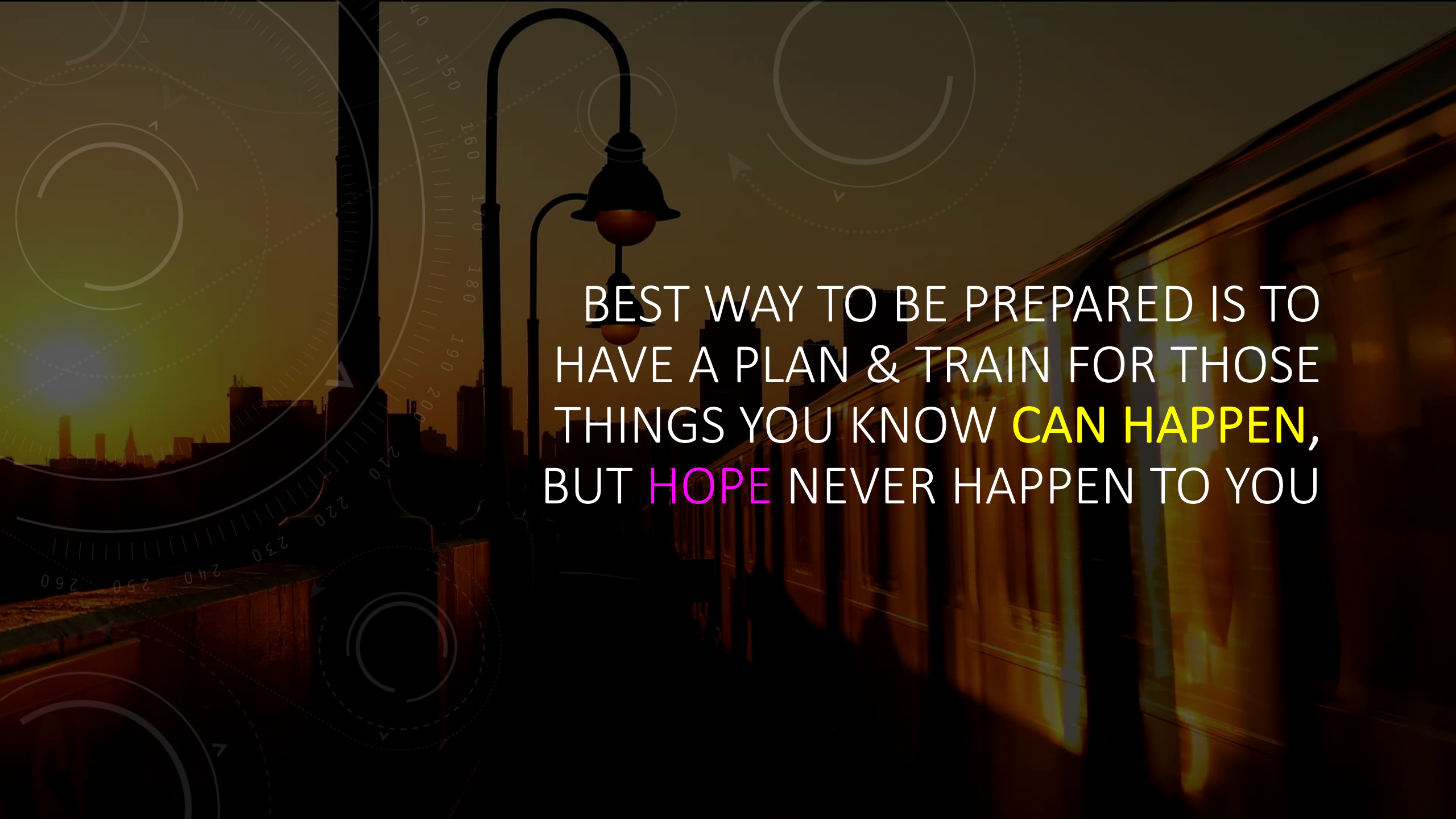
Can You Be Under Prepared
For An Emergency?



The background features a dark blue gradient with a starry space pattern. On the left side, there are several circular gauges or dials with white markings and numbers, including 140, 150, 160, 170, 180, 190, 200, 210, 220, 230, 240, 250, and 260. Some gauges have arrows pointing in different directions, and some have dashed lines around them. The overall aesthetic is technical and futuristic.

BY FAILING TO PREPARE YOU
ARE PREPARING TO FAIL

BENJAMIN FRANKLIN

The background image shows a blurred train moving from right to left, passing a street lamp. The scene is set at dusk or dawn, with a city skyline visible in the distance. Overlaid on the image are various technical graphics, including circular gauges with numerical scales (e.g., 140, 150, 160, 170, 180, 190, 200, 210, 220, 230, 240, 250, 260) and dashed lines, suggesting a theme of engineering or precision.

BEST WAY TO BE PREPARED IS TO
HAVE A PLAN & TRAIN FOR THOSE
THINGS YOU KNOW **CAN HAPPEN**,
BUT **HOPE** NEVER HAPPEN TO YOU

The background features a dark blue gradient with faint, light blue technical diagrams. On the left side, there is a large circular scale with numerical markings from 140 to 260 in increments of 10. Several circular diagrams with arrows and dashed lines are scattered across the background, suggesting a technical or engineering context.

ANOTHER IMPORTANT PART OF BEING
PREPARED IS HAVING THE RIGHT TOOLS OR
SUPPLIES ON HAND SO YOU CAN MINIMIZE
THE DAMAGE.

The background is a dark blue gradient with a subtle pattern of small white dots. Overlaid on this are several faint, light-colored circular and semi-circular elements. On the left side, there is a large circular scale with tick marks and numerical labels ranging from 140 to 260. Other elements include smaller circles, some with dashed outlines, and curved arrows pointing in various directions, suggesting a technical or scientific theme.

EXAMPLE OF TOOLS & CASE STUDY

TYPES OF EMERGENCIES

Natural

Severe Weather (Tornadoes, Thunderstorms, Hail)

Technological

Fire

Chemical Burn

Computer Hacked

Water Leak

Human-Caused

OverDose

Car Accident

Terrorist / Active Shooter

Emergency Procedure Fundamentals

Location of emergency supplies – where are things located – Narcan, first aid kit, towels, shelters, phone numbers – emergency, leasing, maintenance – How do you turn off the water, power - More things to add to the bulletin board

Training of staff. - 2 years –why because they have to go through so many critical experiences to know how to handle them and be able to think on their feet. Do you have a code system – Example - 411 / 911 text

Being prepared is much more than a policy and procedure although that is where it starts because at least you have thought about it – once you thought about it you have to take action to prepare

IDEAS FOR PREPAREDNESS

Staff has a backpack with the following – Narcan, Breathalyzer, Drug Tests, First Aid Kit, Meds, Cash, Phone Charger, Notebook.

Making Sure All Emergency Equipment is Strategically placed throughout the units and clearly marked. Fire Extinguishers, Narcan, First Aid Kit, Tools for repair

Make sure everyone knows where all of the utility access are located. Power Box, Water Shut off.

Narcan training should be incorporated into intake procedure

PAY ATTENTION

There will always be things you don't think of, but it is important to keep your eyes and ears open and try to look into the – WHAT Ifs – and if there is possibility things could go wrong, implementing a process or removing something or adding something that could head off disaster or at least prepare you and your staff on how to handle situations as they come.